

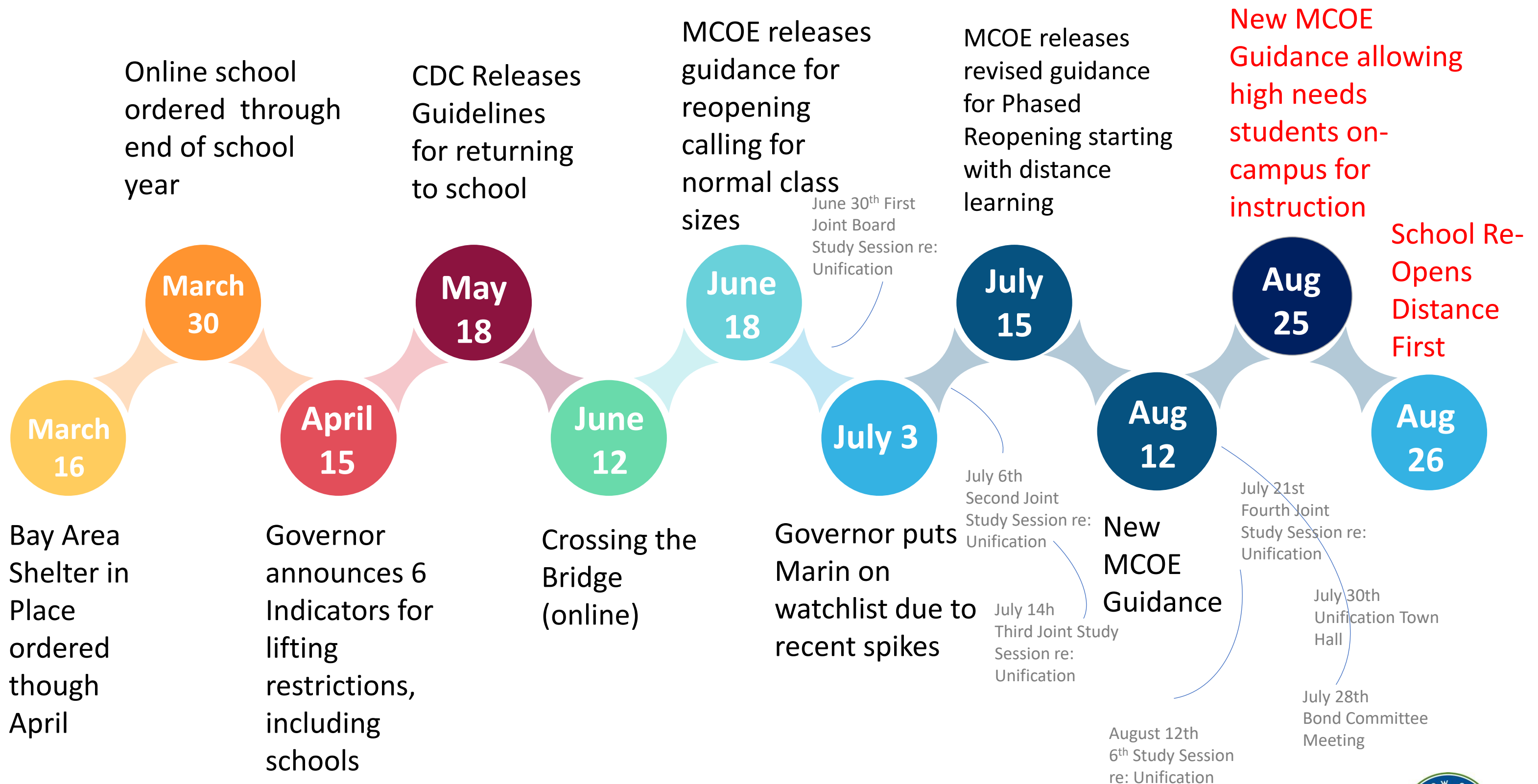
Willow Creek Academy 2020 Fall Reopening Update

Parent Coffee

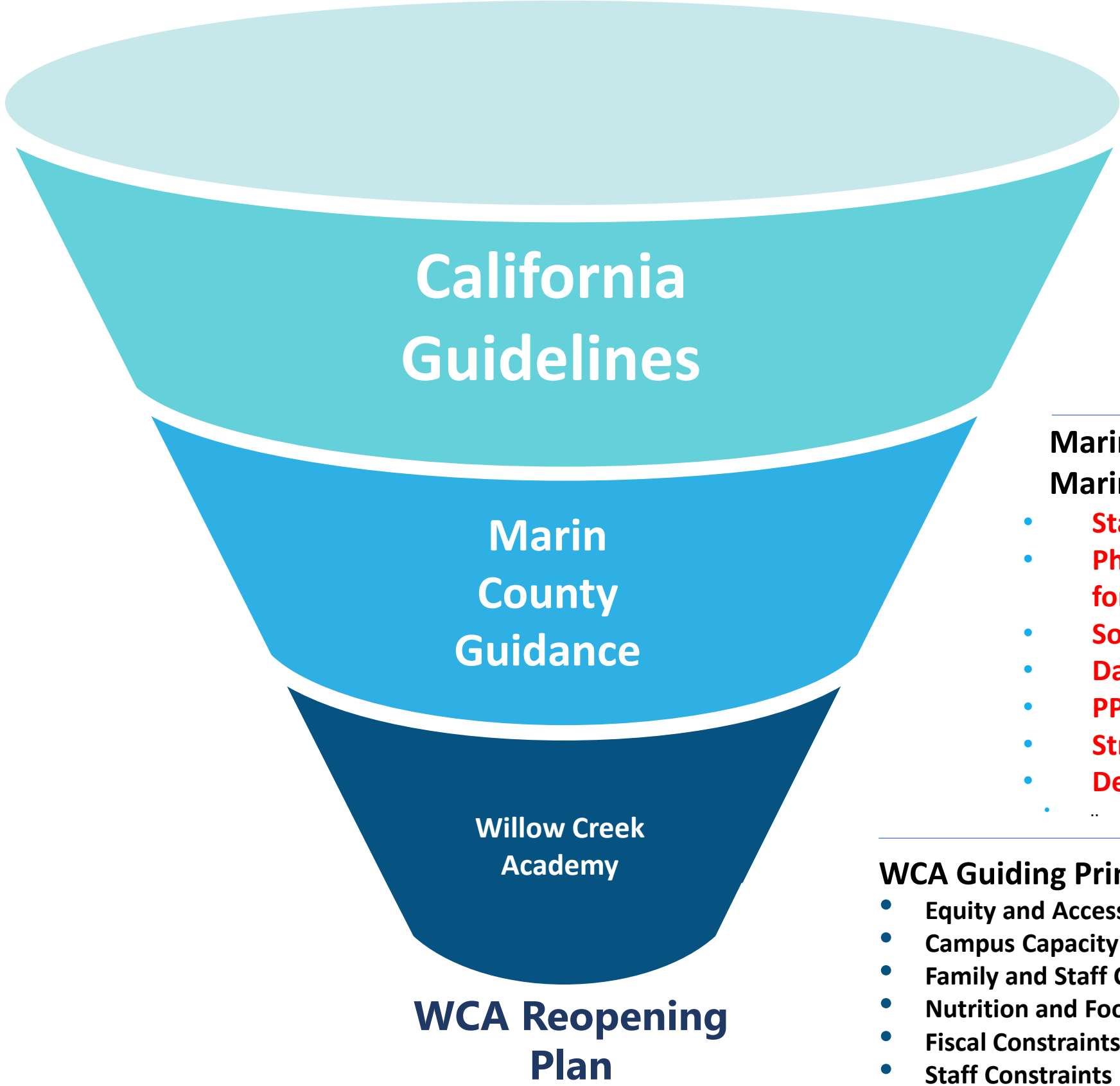
08.14.20 (Updated on 9/3 to include new County Health Guidance and WCA response)



The Spring / Summer 2020 Rollercoaster



Current Guidance (as of August ___)



California Dept of Public Health California Dept. of Education

- Criteria for School Opening and Closures
- Dynamic Response
- Monitoring

**Marin County Health Department
Marin County Office of Education**

- **Start with remote Learning (as of 8/15)**
- **Phased Re-opening prioritizing on-campus instruction for high needs students**
- **Social distancing, face coverings for all staff + students**
- **Daily morning health screenings**
- **PPE provisions**
- **Stringent cleaning and sanitization protocols**
- **Demonstrate ability to pivot btw states**

WCA Guiding Principles & Planning Implications

- Equity and Access to Continuous Learning
- Campus Capacity
- Family and Staff Climate
- Nutrition and Food
- Fiscal Constraints
- Staff Constraints
- Unification



A continuum of responses required depending on State and County health guidance

- Start school on **August 26th** in fulltime distance learning mode
- Middle School (7-8) Community Learning Hubs begin in Marin City **September 9th through October 2nd** for all high needs middle schoolers who struggled with distance learning.
- Start on-campus, synchronous cohort instruction **September 14th** for all high needs K-6 students who struggled with distance learning



- Fulltime on-campus learning for most students with appropriate health and safety measures
- Continuous remote learning option throughout pandemic for families that have health concerns



- Once Marin is off the watchlist, we can bring more select Sanitary Cohorts (1:15) back to campus based on milestone grades
- 3 week rotation of cohorts (A/B Schedules)
- Middle School moves to block scheduling
- No cohort mixing; larger MS cohort groups allowed
- Social distancing enforced through all spaces
- Several outdoor classrooms set up to supplement indoor classrooms
- Full PPE for all teachers and students
- Enhanced cleaning & sanitization
- Continuous Remote Learning Option



Reopening Plan Highlights: **High** to **Moderate** Restrictions



High Restriction

Distance First: Phased Reopening beginning with Remote Learning through September for most students

- Delayed school start until Wednesday August 26th to allow teachers an extra week to prepare for online and in-person instruction
- Middle School Community Learning Hubs (7-8) set up in Marin City to support high needs kids who struggled with distance learning (Starts week of September 8th through October 2nd).
- On-site instruction begins for high needs elementary kids (K-6) who struggled with distance learning in the Spring. They will join the teachers in the classroom while teachers conduct zoom lessons for the larger class.

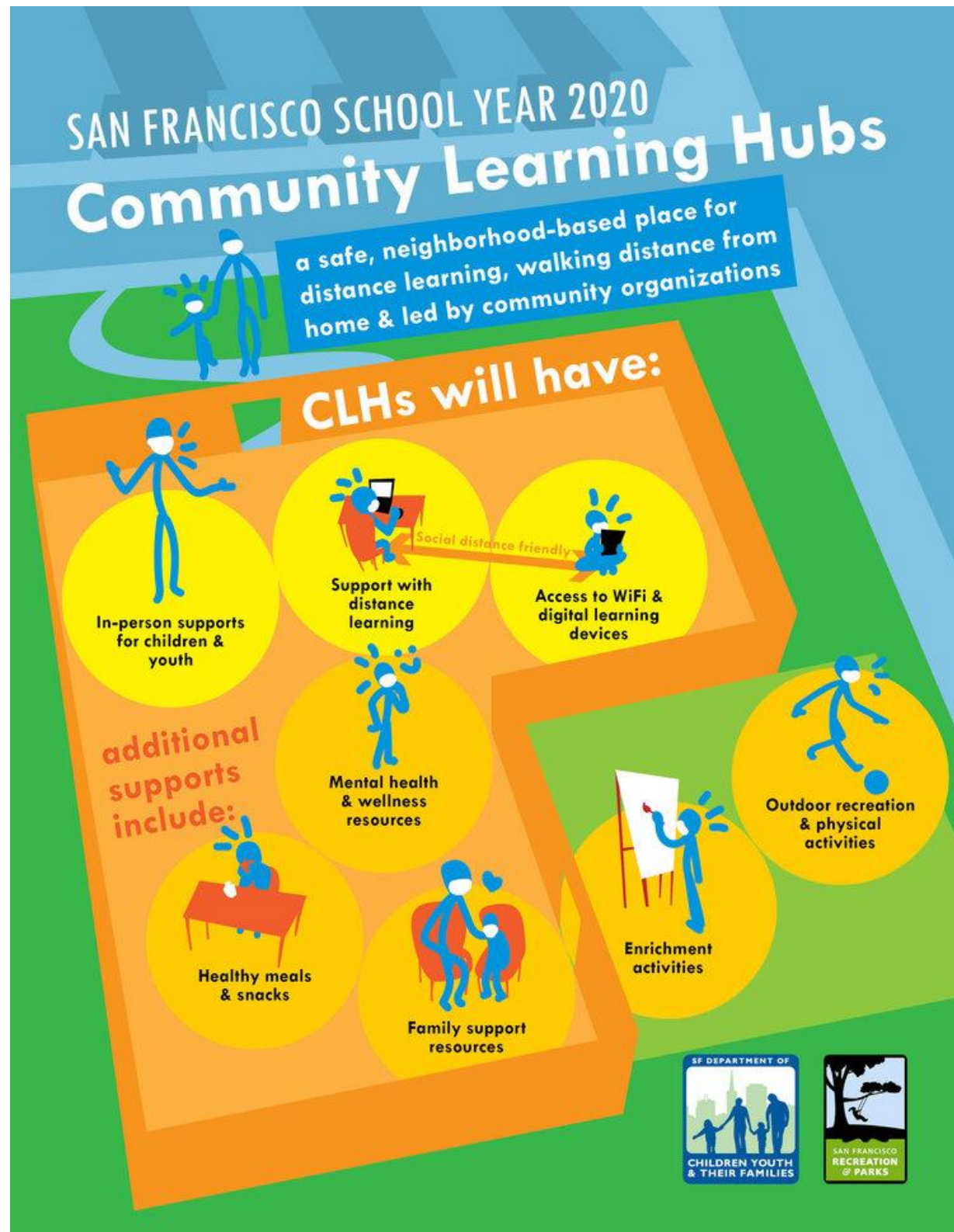


Moderate Restriction

- When Marin County conditions improve, we will start to bring smaller sanitary cohorts of up to 15 kids per cohort back to campus.
- This will be predicated on a **tri-weekly rotational schedule (A/B Schedule)**.
- Remote Learning option continues for those with continued health concerns. Community Learning Hubs can continue for rotating groups
- If conditions worsen and guidelines change re: shelter-in-place, we will all pivot back to a remote learning model until restrictions are lifted.



What are community learning hubs?



- Modeled on programs in San Francisco and cities throughout U.S. to ensure that underserved students and families get the benefit of **pooled homeschooling, socio-emotional support, and recreation** at community facilities in Marin City and Sausalito.
- A **94945 partnership**, led by Alena Maunder and Jen Conway
 - **Marin City CSD**: Terri Greene
 - **Play Marin**: Paul Austin
 - **Bridge the Gap**: Lisa Raffel
 - **Marin Promise**
- Because we can bring high needs K-6 students back to campus by September 14th our Community Learning Hubs are supporting Middle School students through October 2

Reopening Plan Highlights: **Low Restriction**



- **'Normal school'** in which all students whose families are comfortable sending them back to campus can do so.
 - **Class sizes are traditional** but organized into **'stable cohorts'** throughout the day to minimize exposure across groups and to facilitate tracking and tracing when required.
 - **All staff and students wear face coverings** both in the classroom and outside. 4-6' social distancing protocols in place throughout.
 - **Enhanced handwashing, sanitization and cleaning protocols** in place – staff, students and custodians
 - **Arrival and dismissal times are staggered** to minimize group interaction and choke points. Bathroom breaks are coordinated as are between class movement and recess.
 - **Shortened on-campus school day.** Elementary School 8:15 - 2:00 PM and the Middle School would run 8:45 - 3:00, with early release on Wednesday at 2:00
- Students whose parents opt to keep them home follow classroom instruction online.



Stakeholder Engagement: Surveys, Action Groups and Parent Coffee Workshops

- 4 Board Updates re: Reopening
- 6 Morning Coffee Presentations & Discussions re: Opening
- 2 Parent / Family Surveys
- 1 Teacher & Staff Survey
- www.willowcreekacademy.org/ landing page with reopening plans, WCA communications and COVID-19 resources
- 3 Action Group Meetings
- 2 Steering Committee Updates to Parents via Blackboard
- Ongoing Coordination meetings with SMCSD
- Coordination with Community Partners
- Parent Calls (Starting week of 8/10 after survey findings)
- Community Partner Meetings
- Staff PD and safety training
- Additional Staff Surveys
- Parent Handbook (coming week of 9/14) to guide on-campus learning



Distance Learning: What We Heard

Feedback Loop & Direct Actions

- Provide more direct teacher-to-parent communication
- Provide technology training/workshops for parents
- Provide daily assignment updates in a manner that is easy to understand
- Provide clear guidelines for students as to how to submit their assignments
- Increase the amount of synchronous instruction across all grade levels
- Ensure that parents have student passwords for Google classroom
- Provide a greater level of differentiation – for advanced learners and those struggling*
- Create a compact with clear norms for student participation during remote learning
- Provide more teacher facilitated small group instruction
- Provide more opportunities for student interaction/engagement with one another
- Take daily attendance, conduct regularly scheduled morning meetings across all grade levels with focus on Responsive Classroom / SEL
- Provide more unified schedules across all grade levels
- Assign “study buddies”
- Re-evaluate making “Elective Wednesday” for elementary students only



Core Interventions for At-Risk Students

- Week of August 12th, WCA staff made **personal phone calls** to the families of all students working a grade level below or more in reading or math, or received a no mark/low engagement in the spring semester
- During 10-day staff PD, teachers (in collaboration with specialists/intervention specialists etc) we will create **individual intervention plans** for all identified students
- **Community Learning Hubs** for Middle School students (7-8) starting Week of September 8th
- **In-person instruction** for select students K-6 starting September 14th
- Individual intervention plans will be communicated with parents and parents will receive regular progress updates
- **All students will be assessed** at the beginning of the year remotely, using MAP and other on-line assessment tools to identify additional students at risk
- Teaching teams will collaboratively review and update student plans bi-weekly
- Specialists, intervention specialists, assistant teachers, student support staff will contribute as appropriate
- **Monthly student progress reports** will be shared at regular board meetings



Core Interventions: Individual Student Plans

- On-campus small group instruction as allowed
- Community Learning Pods as resource for distance learning for high needs MS kids
- Small group and 1 on 1 intervention w/ intervention specialist + teacher for ELL/reading and/or math
- Recorded Zoom instruction available for instruction review and/or preview
- Student Engagement: Student voice + choice (Howler, passion projects, assessment, inquiry/PBL)
- Online differentiation tools (video, differentiated text levels, audio, reading comprehension strategy tools)
- Differentiated online reading and math programs with progress tracking (NewsELA, Reading Eggs, DreamBox, No Red Ink etc.) with small group explicit basic skill instruction
- Online “Study Hall” for students needing additional support with work completion
- Support from community partners (10,000 degrees, Bridge the Gap, Marin City Library, etc.)
- SEL support to include positive incentives, study buddies, on-line clubs
- Weekly one-to-one check-ins with student support specialists



WCA Stakeholder Outreach & Engagement



Students

- Family survey
- Family Phone interviews
- Student Orientations
- FAQs

Parents & Caregivers

- Family survey
- Morning Coffee Zooms
- Action Groups
- Family Phone Interviews
- Board Meetings
- School Site Protection Plan
- Family Handbook
- Reopening Website

Teachers & Staff

- Staff Surveys
- Teacher and Staff Workshops
- Action Groups
- Blackboard Announcements
- Professional Development
- FAQs

WCA Board

- Board Study Sessions
- Head of School Report

Community Partners

- Conscious Kitchens
- Community Learning Hubs: Bridge the Gap, Marin Promise, Marin City
- Website
- FAQs

County Officials

- Weekly calls re: guidance and compliance
- Continuity of Learning Plan

Civic Partners

- Board Meetings
- Website
- Civic resource planning
- Press Releases
- Presentations
- FAQs

SMCSD & BMLK

- District Board Meetings
- WCA Board Meetings
- Joint Study Sessions
- Unification Town Halls



Curriculum - Remote Learning

Key Themes & Opportunities

- More professional development for teachers in remote teaching
- Incorporation of SEL learning, promote sense of belonging (i.e., daily openers, incentives for students to show up on time)
- More early outreach to families of struggling students
- Build in regular time for intervention
- Reconsider "elective Wednesday", or make the 5th day small group instruction/intervention
- Provide options for on-line opportunities outside of regular curriculum
- Tech "hotline" for students/families
- After school online opportunities



How is reopening supporting unification ?

We continue to collaborate with the district and BMLK around reopening to pave the way for unification in January 2021

- Joint Board Meetings
- Joint curriculum planning
- Joint Professional Development
- Joint community outreach and support
- Joint purchasing and fundraising
- Joint facility planning and preparation



Campus Prep Update



- ✓ Student capacity analysis at different cohort sizes
- ✓ Room by room and campus site survey with facilities staff and superintendent 7/3
- ✓ Identified pinch points and safety mitigation measures
- ✓ Identified, catalogued and shared necessary COVID-related work orders items for 7/31 completion
- ✓ Validated campus readiness plans (screening stations locations and entries, directional flow, classroom layouts, outdoor classrooms)
- ✓ Prepared COVID safety purchasing list
- ✓ District cleaning, prep and deferred maintenance



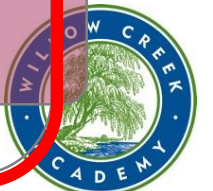
(Draft) COVID Safety Purchasing List

Description	Qty	Unit Cost	Total
Hand Sanitizing Stations	20	\$ 6.00	\$ 120.00
Acrylic Partitions for teacher consultation and counseling	10	\$ 40.00	\$ 400.00
Drape/Curtain in front of bookcases	18	\$ 10.00	\$ 180.00
Backpack racks outside classrooms (1 per classroom)	24	\$ 16.00	\$ 384.00
Door stops for all classrooms (medium and large)	30	\$ 2.00	\$ 60.00
Window poles for clerestory windows	15	\$ 16.00	\$ 240.00
SML Picnic tables with umbrellas for outdoor dining and classrooms	36	\$ 400.00	\$ 14,400.00
Tree stumps for outdoor classrooms (6x26)	156	\$ 40.00	\$ 6,240.00
Benches	12	\$ 100.00	\$ 1,200.00
Portable table for screening station	2	\$ 40.00	\$ 80.00
Outdoor hand washing stations	2	\$ 600.00	\$ 1,200.00
Hand Sanitizing Stations	1	\$ 10.00	\$ 10.00
Acrylic Partitions for Offices and Counseling Areas	2	\$ 20.00	\$ 40.00
Water bottles for each student	380	\$ 3.00	\$ 1,140.00
Washer and Dryer	1	\$ 2,000.00	\$ 2,000.00
Round Bench/Table w/umbrellas for outside staff lounge	3	\$ 400.00	\$ 1,200.00
Curriculum storage container (for analog curriculum packet pickup)	4	\$ 40.00	\$ 160.00
Backpack hooks - outside classrooms	24	\$ 20.00	\$ 480.00
Campus Level Signage (drop off, social distancing, wayfinding, etc.)		\$ 600.00	\$ 600.00
Classroom Level Signage (training, informational)	4	\$ 200.00	\$ 800.00
Fabric over books in library and classrooms	TBD	\$ 100.00	
Fencing/Gates for walk up (at both entry stations)	2	\$ 200.00	\$ 400.00
Storage Containers / Sheds	3	\$ 400.00	\$ 1,200.00
Trash cans	20	\$ 20.00	\$ 400.0
Oscillating fans in rooms where window operability not fixed	6	\$ 40.00	\$ 240.0
Crome Books	200	\$ 200.00	\$ 40,000.0
Wireless Infrastructure Upgrade			\$ 20,000.0
Student PPE (beyond County-provided)			\$ 500.0
Additional Teacher and Staff PPE (beyond County-provided)			\$ 1,000.0
Classroom Conferencing technology	20	\$ 799.00	\$ 15,980.0
Clipboards for outdoor learning support	400	\$ 1.00	\$ 400.0
Ties for shades in Upper Campus	40	\$ 4.00	\$ 160.0
Classroom Cleaning Supplies for Teachers (beyond provided)	200	\$ 30.00	\$ 6,000.0
Hand Sanitizers	100	\$ 6.00	\$ 600.0
Total			\$ 117,214.0



Next Steps

	May	June	July	August/Sept
1. Curriculum & Instruction	<ul style="list-style-type: none"> Identify Action Group Review best practices for online and in-class instruction 	<ul style="list-style-type: none"> Clean out classrooms Assess issues and opportunities 	<ul style="list-style-type: none"> Instructional Strategy Gather and integrate additional input from teachers 	<ul style="list-style-type: none"> Finalize Instructional plans and schedules
2. Social Emotional Wellness	<ul style="list-style-type: none"> Identify Action Group 	<ul style="list-style-type: none"> ID best practices Assess issues and opportunities 	<ul style="list-style-type: none"> Wellness Strategy 	<ul style="list-style-type: none"> Share out social emotional wellness strategies
3. Facilities, Operations & IT	<ul style="list-style-type: none"> Capacity & Schedule Studies Meet with District & County Enrollment survey 	<ul style="list-style-type: none"> Parent survey Cohort & Schedule Scenarios ID pinch points & strategies SD Key purchasing needs 	<ul style="list-style-type: none"> Schedule and cohort plan Cleaning & disinfectant plan Food service plan Afterschool & childcare 	<ul style="list-style-type: none"> Site Preparedness Plan Site Visit from County Upgrade IT infrastructure Train staff / custodians Train parents and students
4. Safety & Compliance	<ul style="list-style-type: none"> Review State and County guidelines Identify pinch points 	<ul style="list-style-type: none"> Modify WCA protocols from CDE and County Guidelines Purchase PPE & supplies 	<ul style="list-style-type: none"> ID Staff & volunteer monitors WCA Compliance protocols Establish success metrics PPE and critical supplies 	<ul style="list-style-type: none"> Safety Plan Teacher/ Staff Training Student Training Parent training
5. Events & Partnerships	<ul style="list-style-type: none"> ID action group Review existing partnerships ID pinch-points 	<ul style="list-style-type: none"> Review State and County guidelines ID partnership opportunities 	<ul style="list-style-type: none"> ID Key WCA community events Joint WCA/BMLK events 	<ul style="list-style-type: none"> Develop Community Events Schedules Partnership around distance learning and community hubs
6. Communications	<ul style="list-style-type: none"> Letter to staff and WCA Community with Steering Committee & Focus Areas 	<ul style="list-style-type: none"> Teacher survey Parent survey Options development COVID resource landing page 	<ul style="list-style-type: none"> Communications protocols Communicate cohorts and cohort schedules Communicate family options 	<ul style="list-style-type: none"> Parent Reopening Handbook
7. Financial & Legal	<ul style="list-style-type: none"> Understand budget landscape Identify needs & constrains ID COVID-related grants Identify compliance legal issues 	<ul style="list-style-type: none"> Vote on 2020-21 Budget Review CA budget impacts Fundraising needs & resources ID potential legal issues 	<ul style="list-style-type: none"> Submit budget July 1 Targeted fundraising / grants Compliance and legal issues 	<ul style="list-style-type: none"> Prioritize CARE Funding Purchases
8. Staff Support & HR	<ul style="list-style-type: none"> ID action group Identify needs & constrains Identify legal issues 	<ul style="list-style-type: none"> Staff survey Review best practices Identify individualized needs 	<ul style="list-style-type: none"> Draft staff support program Assess HR issues 	<ul style="list-style-type: none"> Professional Development Implement and train staff



WCA's Reopening Guiding Principles

1. **Health and Safety** - The health and safety of staff and students is the single highest priority.
2. **Equity & Access** - All students and their families enjoy equal access to the tools they need to be successful learners, at home and at school
3. **Academic Success** - In-class instruction, assisted by on-line learning tools, provides the most effective, equitable learning environment for WCA students to meet learning objectives and access needed instructional support.
4. **Stable Cohorts*** - The core operational structure of WCA school programs is a stable cohort.. This structure helps to mitigate the spread of germs, enables health providers to trace contacts in the event of an infection, and isolates the need for potential closures.
5. **Physical Distancing** - For students, the cohort in itself is the physical distancing practice, however, measures must be taken to ensure safe distancing within the cohort itself to the extent practicable (preschool students and some students with special needs are not expected to maintain 4-6ft. distance).
6. **Procedures and Protocols** - Specific safety protocols including daily health screening, temperature checks, restroom use procedures, paths of travel, outdoor recreation activities, substitute procedures, will be carefully planned, implemented, monitored and updated on a regular basis.
7. **Social Emotional Support** - Relationships and in-person connectivity are a critical component of social development for students, teachers and staff.
8. **Flexibility & Transparency** - WCA is ready to act quickly, decisively, and flexibly according to a set of clear protocols that are communicated effectively and responsive to the voices of our community
9. **Unification** - Return to School planning is conducted in collaboration with District leadership in consideration of school unification and what is in the best interest of all families in the district

